

Setting up Cortex Desktop to Run As Administrator on Windows 7 and 8

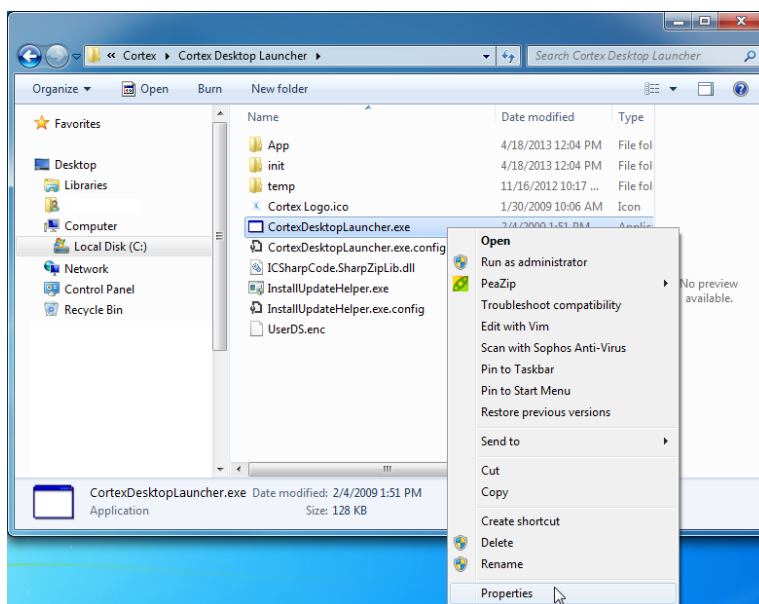
If you are running Cortex Desktop on Windows 7 or 8, you must allow Cortex Desktop to run as administrator. This permission ensures your ability to download Cortex Desktop updates.

Downloading Cortex Desktop updates is vital to keeping Cortex Desktop functioning properly. An automatic download of updates occurs when you first login. Without downloading the updates, you will not be able to log in. It is also a highly recommended procedure for your subsequent work in Cortex Desktop. For more details on updates, refer to your *Cortex Desktop Installation Guide*.

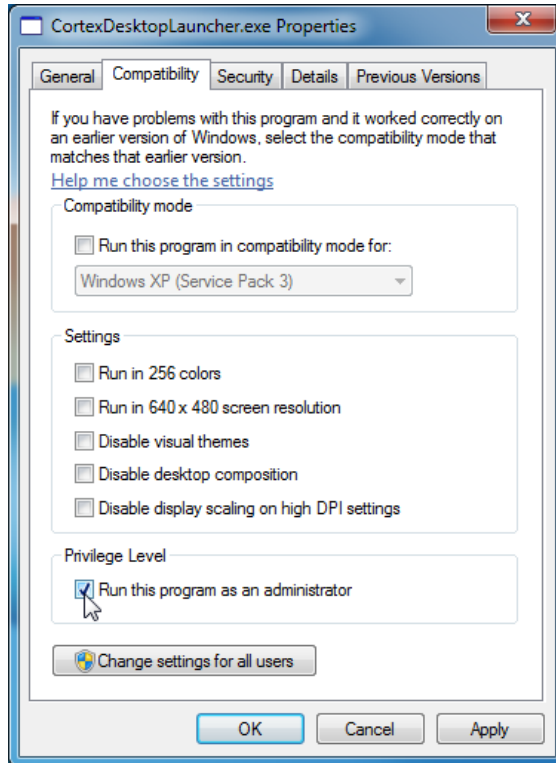
To be able to set administrator permissions, you need to be defined as the **administrator** on the computer. If you need help, contact your IT personnel.

To set administrator permissions for Cortex Desktop from the installation directory:

- 1 In Windows Explorer, browse to the folder where you installed Cortex Desktop. If you have not changed the default installation location, this is **C:\Program Files\Cortex** or **C:\Program Files (x86)\Cortex**.
- 2 Double-click on the **Cortex Desktop Launcher** folder.
- 3 Right-click on the **Cortex Desktop Launcher** (application) and click **Properties** to open the **Properties** window.



- 4 In the **Compatibility** tab of the **Properties** window, check **Run this program as an Administrator**, and then click **OK**.



- 5 Launch Cortex Desktop and click **YES** to download all available updates.
- 6 Enter your **User Name** and **Password** and click **Login**.
The **Cortex Desktop** window is displayed.

To set administrator permissions for Cortex Desktop from the Windows desktop:

- 1 On the Windows desktop, right-click on the **Cortex Desktop Launcher** icon and click **Properties**.
- 2 On the **Compatibility** tab of the **Properties** window, check **Run this program as an Administrator**, and then click **OK**.
- 3 Launch Cortex Desktop and click **YES** to download all available updates.
- 4 Enter your **User Name** and **Password** and click **Login**.
The **Cortex Desktop** window is displayed.

How to change your Windows Display settings in Windows 7 and 8

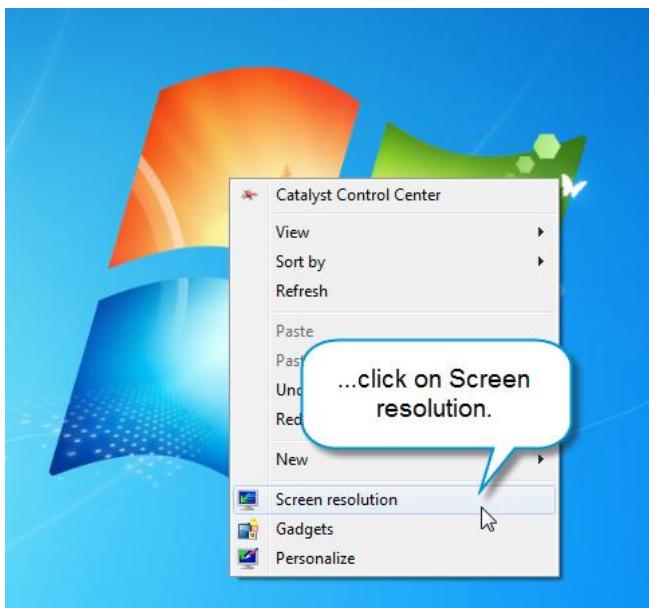
If you encounter problems viewing Cortex Desktop correctly in Windows 7 or 8, you may need to adjust your Windows Display settings.

To change your settings in Windows 7 or Windows 8:

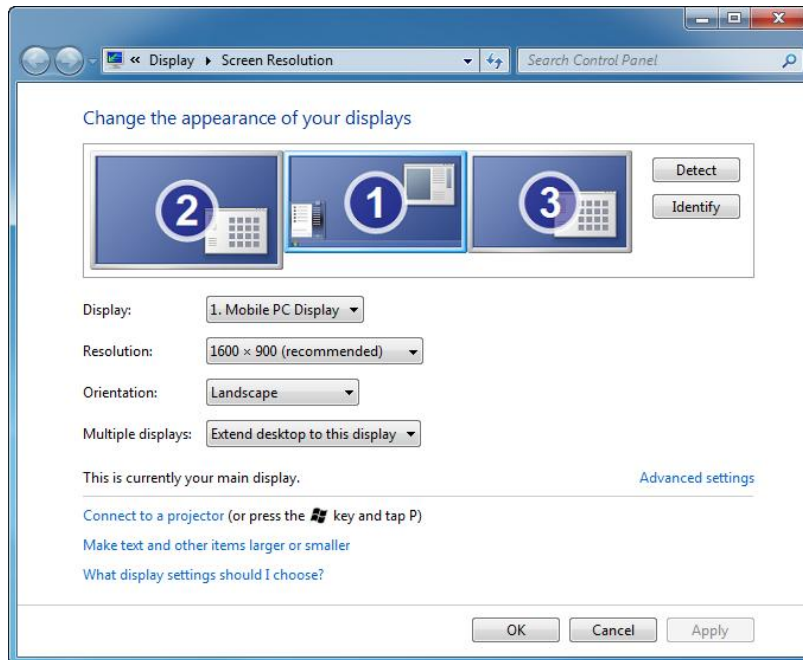
- 5** Right click on your **Windows Desktop** and select **Screen resolution**.



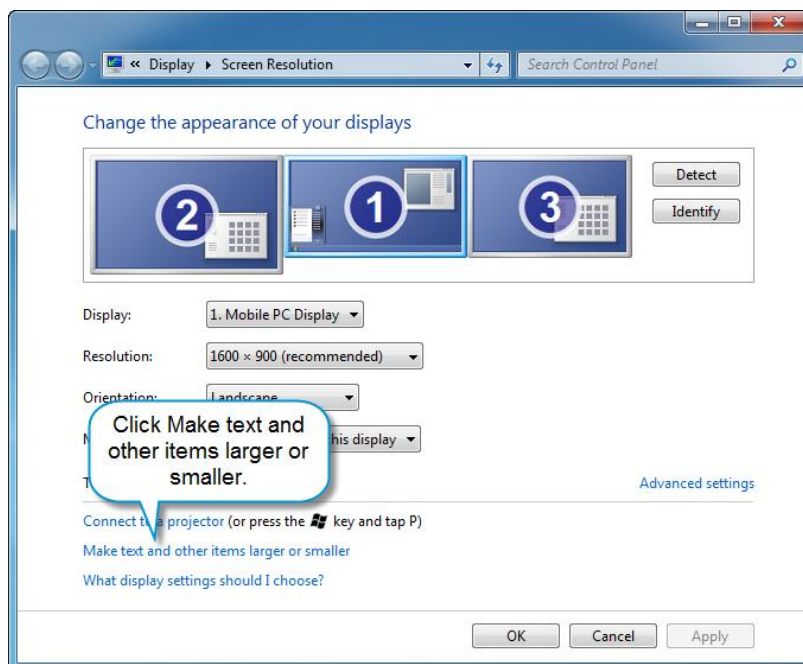
- 6** Click **Screen resolution**.



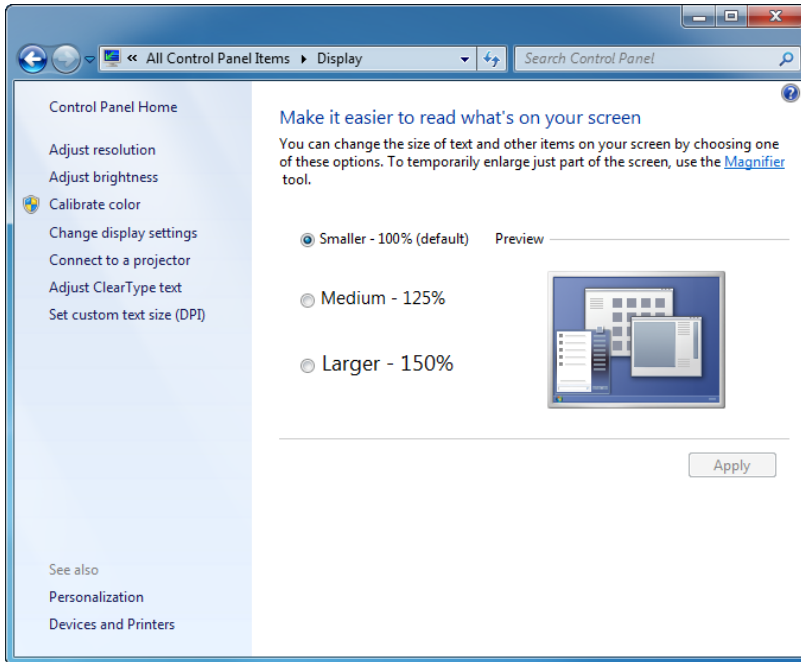
The **Change the appearance of your displays** window appears.



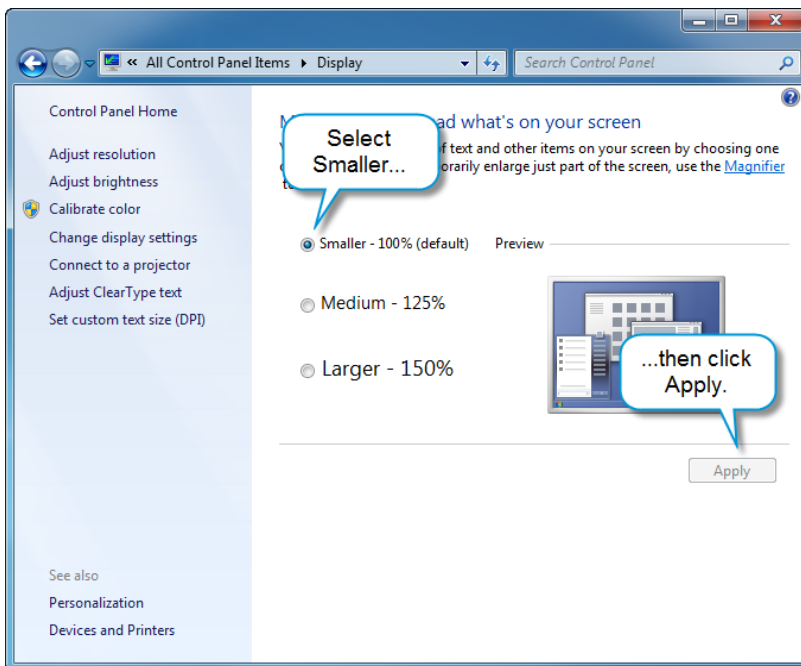
7 Click **Make text and other items larger or smaller**.



The **Make it easier to read what's on your screen** window appears.



8 Select the **Smaller – 100% (default)** radio button and click **Apply**.



9 Close the window by clicking the red **X**, close button.